

Welcome to the AccessibilityOnline Webinar Series



A collaborative program between the
ADA National Network and the
U.S. Access Board



The Session is Scheduled to begin at 2:30pm Eastern Time
We will be testing sound quality periodically

Audio and Visual are provided through the on-line webinar system. This session is closed captioned. Individuals may also listen via telephone by dialing 1-712-432-3100 code 930098 (This is **not** a Toll Free number)

The content and materials of this training are property of the US Access Board and the Great Lakes ADA Center and cannot be used and/or distributed without permission. This program is funded through a contract agreement with the U.S. Access Board. For permission to use training content or obtain copies of materials used as part of this program please contact us by email at adata@adagreatlakes.org or toll free (877)232-1990 (V/TTY)

www.AccessibilityOnline.org



Listening to the Webinar



- ▶ The audio for today's webinar is being broadcast through your computer. Please make sure your speakers are turned on or your headphones are plugged in.
- ▶ You can control the audio broadcast via the Audio & Video panel. You can adjust the sound by "sliding" the sound bar left or right.
- ▶ If you are having sound quality problems check your audio controls by going through the Audio Wizard which is accessed by selecting the microphone icon on the Audio & Video panel



2



Listening to the Webinar, *continued*

If you do not have sound capabilities on your computer or prefer to listen by phone, dial:

1-712-432-3100


Pass Code:
930098

This is **not** a Toll Free number

3



Captioning

- ▶ Real-time captioning is provided during this webinar.
- ▶ The caption screen can be accessed by choosing the  icon in the Audio & Video panel. ↓
- ▶ Once selected you will have the option to resize the captioning window, change the font size and save the transcript.



4



Submitting Questions

For Q&A within Webinar Platform: Using your mouse, choose “Great Lakes ADA” from the Participant list and double click. A tab titled “Great Lakes ADA” will appear in the chat panel. Type your question in the text box and “enter”. Your question will be submitted to the presenters. It will not be viewable by other participants. (Keyboard - F6, Arrow up or down to locate “Great Lakes ADA” and select to send a message)

- ▶ If you are listening by phone and not logged in to the webinar, you may ask questions by emailing them to adaconferences@adagreatlakes.org



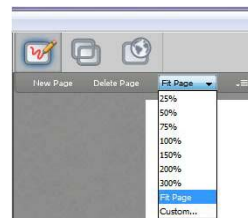
Please note: This webinar is being recorded and can be accessed on the AccessibilityOnline website at www.accessibilityonline.org/Archives within 24 hours after the conclusion of the session.

5



Customize Your View

- ▶ Resize the Whiteboard where the Presentation slides are shown to make it smaller or larger by choosing from the drop down menu located above and to the left of the whiteboard. The default is “fit page”



6



Customize Your View *continued*



- ▶ Resize/Reposition the Chat, Participant and Audio & Video panels by “detaching” and using your mouse to reposition or “stretch/shrink”. Each panel may be detached using the ≡ icon in the upper right corner of each panel.

7



Technical Assistance



- ▶ If you experience any technical difficulties during the webinar:
 1. Send a private chat message to the host by double clicking “Great Lakes ADA” in the participant list. A tab titled “Great Lakes ADA” will appear in the chat panel. Type your comment in the text box and “enter” (Keyboard - F6, Arrow up or down to locate “Great Lakes ADA” and select to send a message); or
 2. Email adaconferences@adagreatlakes.org; or
 3. Call 877-232-1990 (V/TTY)

8



Open Questions and Answers Session

9

Presenters



Bill Botten



Marsha Mazz



Rex Pace

U.S. Access Board

10

Session Agenda

- **Responses to previously submitted questions**
- **Open Q & A**

11

Topics

- Application
- Protruding objects
- Operable parts
- Accessible Routes
- Doors
- Parking
- Stairways
- Plumbing
- Signage
- Assembly areas
- Transient lodging
- Restaurants/dining
- Sales and service counters
- Residential facilities
- Swimming pools/spas
- Public Rights of Way

12



About the Access Board

Providing leadership in accessible design

- Guidelines and Standards
- Technical Assistance
- Training and Outreach
- Research
- ABA Enforcement



13

Webinar Series

- 1st Thursday of each month
- Schedule up to September 2013
 - April 4th – *Accessible Restaurants and Cafeterias*
 - May 2nd – *Accessible Elevators and Platforms Lifts*
 - June 6th - *Accessible Fire Alarms Systems*
 - July 11th – *Section 508 – Accessible Web Content (WAG 2.0)*
 - August 1st – *Accessible Transportation Facilities*
 - September 5th – *Open Q & A Session*
 - Topic ideas encouraged!

14

Archived Webinars

- Means of Egress
- Amusement Rides
- Medical Diagnostic Equipment
- Historic Buildings and Facilities
- Assistive Listening Systems
- Webinars
- Detention and Correctional Facilities
- Miniature Golf
- Communication Elements and Features
- Accessible Courthouses and Courtrooms
- Accessible Detention and Correctional Facilities

<http://www.accessibilityonline.org/Archives/>

15

Application

16

Application

Americans with Disabilities Act (ADA)

- State and local governments
- Places of public accommodation



Architectural Barriers Act (ABA)

- Facilities designed, built, altered, or leased with Federal funds.



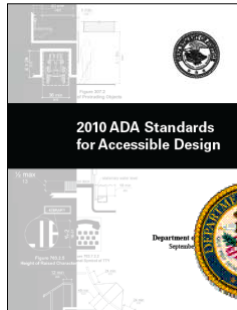
17

ADA vs. ABA

- Key differences
 - Employee work areas (203.9)
 - Equivalent facilitation (103)
 - Existing elements (F203.2)
 - Leasing (F202.6)
 - Vertical access (206.2.3)

18

New ADA Standards



DOJ's 2010 standards (mandatory March 15)



Based on the Board's ADA-ABA Guidelines (2004)



19

Alterations

- *"A change to a building or facility that affects or could affect the usability of the building or facility or portion thereof."*
- Alterations include, but are not limited to, remodeling, renovation, rehabilitation, reconstruction, historic restoration, resurfacing of circulation paths or vehicular ways, changes or rearrangement of the structural parts or elements, and changes or rearrangement in the plan configuration of walls and full-height partitions.
- Normal maintenance not considered an alteration unless it affects usability

20

Employee Work Areas

“All or any portion of a space used only by employees and used only for work. Corridors, toilet rooms, kitchenettes and break rooms are not employee work areas.”

21

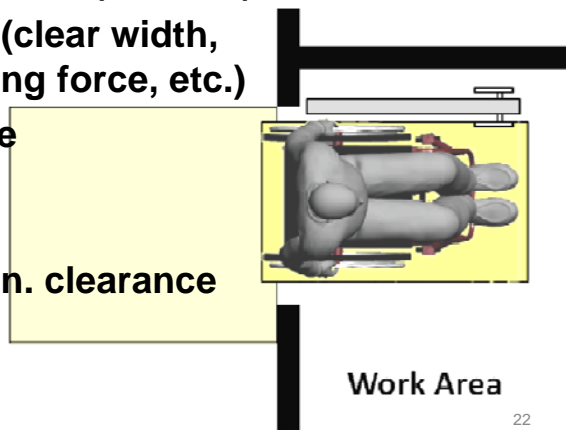
Work Areas

Access for “approach, entry, & exit”

- Door man. clearance (exterior)
- Compliant door (clear width, hardware, opening force, etc.)
- Clear floor space

Recommended:

- Interior door man. clearance
- Turning space



22

Side-by-Side Comparison (original standards/ ADA-ABA guidelines/ IBC)

APPLICATION, ADMINISTRATION AND SCOPE		
New ADAAG ¹	DOJ Standards for Accessible Design ²	International Building Code ³
ADA CHAPTER 1: APPLICATION AND ADMINISTRATION	1. PURPOSE. See Appendix 1. ⁴	IBC SECTION 101 GENERAL
101.1 General. This document contains scoping and technical requirements for accessibility to sites, facilities, buildings, and elements by individuals with disabilities. The requirements are to be applied during the design, construction, additions to, and alteration of sites, facilities, buildings, and elements to the extent required by regulations issued by Federal agencies under the Americans with Disabilities Act of 1990 (ADA).	This document sets guidelines for accessibility to places of public accommodation and commercial facilities by individuals with disabilities. These guidelines are to be applied during the design, construction, and alteration of such buildings and facilities to the extent required by regulations issued by Federal agencies, including the Department of Justice, under the Americans with Disabilities Act of	IBC 101.3 Intent. ⁵ The purpose of this code is to establish the minimum requirements to safeguard the public health, safety and general welfare through structural strength, means of egress facilities, stability, sanitation, adequate light and ventilation, energy conservation, and safety to life and property from fire and other hazards attributed to the built environment and to provide safety to fire fighters and emergency responders during emergency operations.

¹ Published in the Federal Register on July 23, 2004.
² 28 CFR Part 36, App. A, July 1, 1994 Edition.
³ International Code Council (ICC) 2003 International Building Code and 2004 Supplement (referencing ICC/ANSI A117.1-2003) Copyright© 2004, International Code Council, Inc. All rights reserved. Reprinted with permission.
⁴ The appendix to this analysis contains requirements that were added to the Americans with Disabilities Act Accessibility Guidelines (ADAAG) by the U.S. Access Board, subsequent to the DOJ adoption of the Standards for Accessible Design in 1994, through September 2002. The material in the appendix has not been incorporated in the Department of Justice accessibility standards and therefore is not enforceable. It is referenced herein to indicate the source of the corresponding New ADAAG requirements.
⁵ Sections in this column are prefaced by 'IBC' or 'ANSI' to indicate the source as the International Building Code or ICC/ANSI A117.1 standard, respectively.

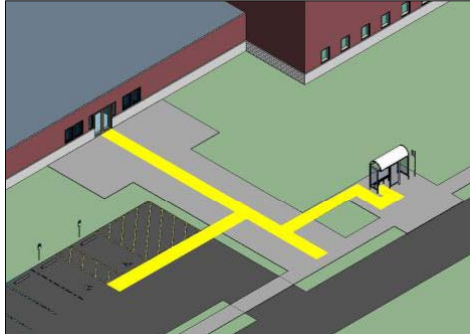
23

Accessible Routes

24

Accessible Routes

Connection to public streets and sidewalks, parking, passenger loading zones, public transportation stops



(Exception: site arrival by vehicle only)

25

Protruding Objects

26

Protruding Objects

Standards limit protrusions from walls and posts along all circulation paths, including stairways



27

Doors

28

Doors

- Use of chain link locks
- Spring hinges vs. closers
- Sliding doors – gaps in threshold

29

Hardware (404.2.7)

- 1 hand operation
- No tight grasping, pinching, twisting of wrist
- 5 lbf max. force
- Height: 34" – 48" AFF (exception for certain existing doors and gates at pools)



30

Hardware

Levers, pulls, and other types comply
Not compliant: rounded knobs



31

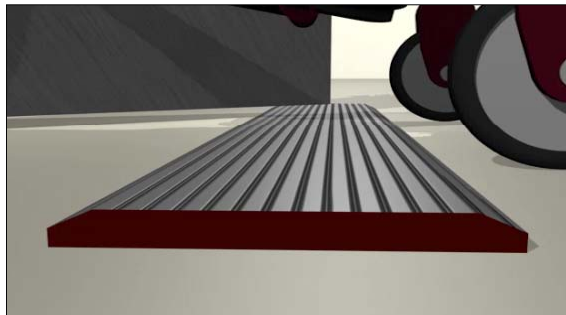
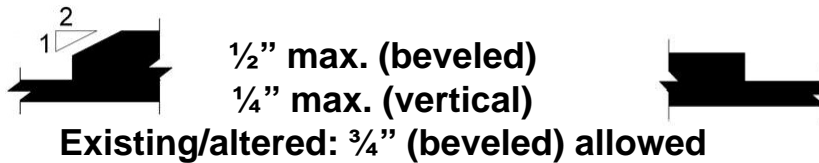
Hardware

**Closed fist/ loose grip operability =
good (but not required)**



32

Thresholds (404.2.5)



33

Panic Hardware

309.4 Operation. Operable parts shall be operable with one hand and shall not require tight grasping, pinching, or twisting of the wrist. **The force required to activate operable parts shall be 5 pounds (22.2 N) maximum.**



• **404.2.9 Door and Gate Opening Force.** Fire doors shall have a minimum opening force allowable by the appropriate administrative authority. The force for pushing or pulling open a door or gate other than fire doors shall be as follows:

1. Interior hinged doors and gates: 5 pounds (22.2 N) maximum.
2. Sliding or folding doors: 5 pounds (22.2 N) maximum.

34

Parking

35

Parking

- Length of van space
- Measuring slope of space
- Wheel stops
- On-street parking

36

Van access aisle

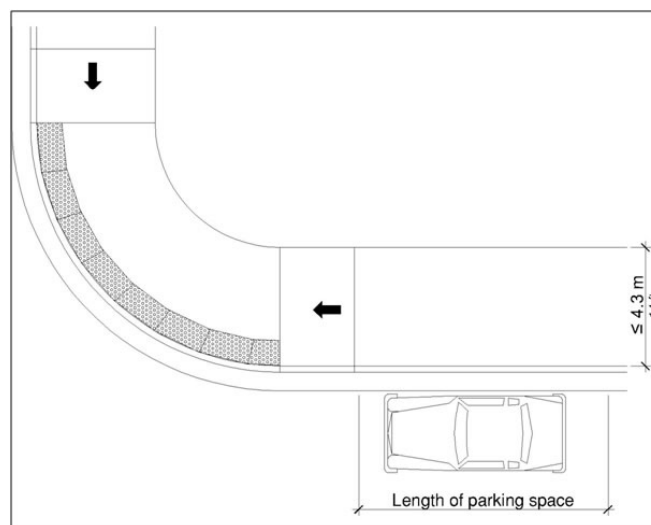
Recommendation: Provide access aisle for vans on the passenger side so that drivers do not have to back into the space



UNITED STATES ACCESS BOARD

37

On Street Parking



38

Vehicle Overhang



UNITED STATES ACCESS BOARD

39

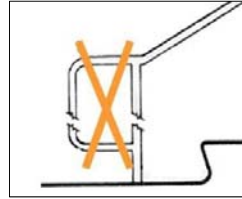
Stairways

40

Stairways

Covered: all stairs that are part of means of egress

(exceptions for altered and assembly stairs)



- Removed: level 12" h-rail extension at bottom
- Riser height (4"-7")

41

Plumbing

42

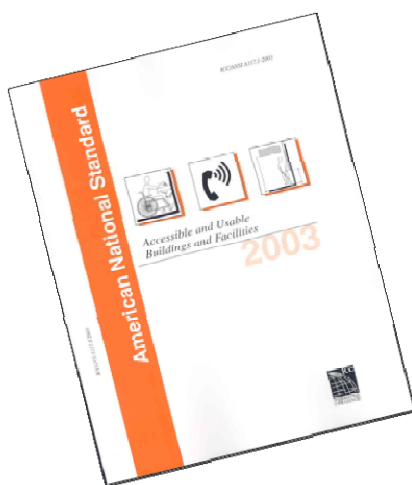
Plumbing

- Garden tubs
- Grab bars forces

609.8 Structural Strength. Allowable stresses shall not be exceeded for materials used when a vertical or horizontal force of 250 pounds (1112 N) is applied at any point on the grab bar, fastener, mounting device, or supporting structure.

43

Using more stringent



44

Shower Spray Unit

Hand-held shower spray unit

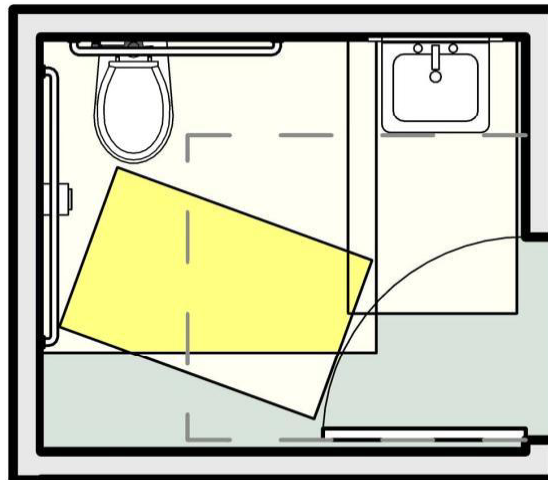
on/off control with “non-positive shut-off”



UNITED STATES ACCESS BOARD

45

Toilet Room

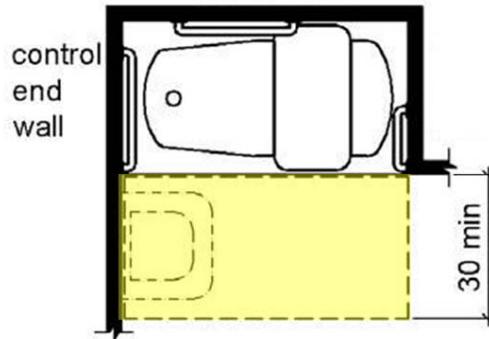


New standards: permit door swing into fixture clearances where unobstructed wheelchair space is available beyond it

46

Lavatory in Tub Clear Floor Space

Clear floor space at tub with removable seat



47

Bath Tub (removable seat)



48

Children's elements

Elements designed specifically for use by children 12 and younger.

- drinking fountains (§602)
 - water closets and toilet compartments (§603)
 - lavatories and sinks (§606) and
 - dining and work surfaces (§902).
- Advisory notes on children's reach ranges (§301.1) and ramp handrails (§505.4)



49

Children's Toilets

Advisory information provides guidance according to age group

	Ages 3 & 4	Ages 5 - 8	Ages 9 - 12
WC Centerline	12 in	12 - 15 in	15 - 18 in
Toilet Seat Height	11 - 12 in	12 - 15 in	15 - 17 in
Grab Bar Height	18 - 20 in	20 - 25 in	25 - 27 in
Dispenser Height	14 in	14 - 17 in	17 - 19 in

50

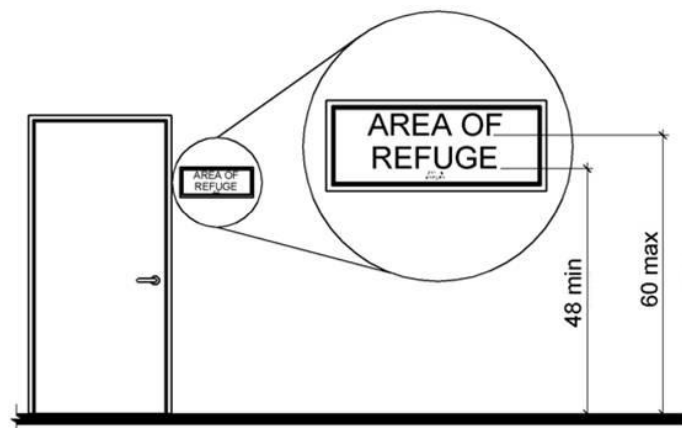
Signage

51

Tactile Signs: Location

New standards:

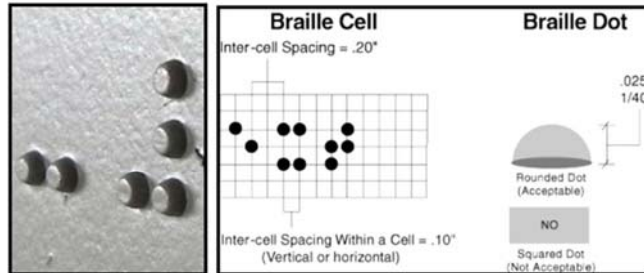
48" – 60" high measured to character baseline (instead of 60" centerline)



52

Signage

- Are the braille dots indicated in the photo considered domed or rounded, in conformance to the 2010 ADA Standards?



53

Assembly areas

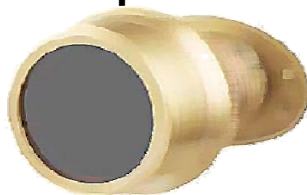
54

Transient Lodging

55

Peepholes

Tip: Prisms/ lenses (door scopes) available that provide wide-angle view and are usable from standing and seated positions



(standards do not address peephole height)

56

Mobility Features Scoping

224.2 Guest Rooms with Mobility Features (text version)			
Total Number of Guest Rooms Provided	Minimum Number of Required Rooms without Roll-In Showers	Minimum Number of Required Rooms with Roll-In Showers	Total Number of Required Rooms
1 to 25	1	0	1
26 to 50	2	0	2
51 to 75	3	1	4
76 to 100	4	1	5
101 to 150	5	2	7
151 to 200	6	2	8
201 to 300	7	3	10
301 to 400	8	4	12
401 to 500	9	4	13
501 to 1000	2 percent of total	1 percent of total	3 percent of total
1001 and over	20, plus 1 for each 100, or fraction thereof, over 1000	10, plus 1 for each 100, or fraction thereof, over 1000	30, plus 2 for each 100, or fraction thereof, over 1000

UNITED STATES ACCESS BOARD

57

Communication Features Scoping

224.4 Guest Rooms with Communication Features	
Total Number of Guest Rooms Provided	Minimum Number of Required Guest Rooms with Communication Features
2 to 25	2
26 to 50	4
51 to 75	7
76 to 100	9
101 to 150	12
151 to 200	14
201 to 300	17
301 to 400	20
401 to 500	22
501 to 1000	5 percent of total
1001 and over	50, plus 3 for each 100 over 1000

UNITED STATES ACCESS BOARD

58

Restaurants and Dining

59

Dining

- Dispersion of accessible dining surfaces
- Toe clearance requirements
- New construction vs. alterations

60

Sales and Service

61

Sales and Service Counters (904.4)

Parallel Approach

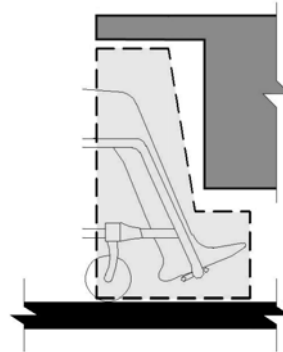


UNITED STATES ACCESS BOARD

62

Sales and Service Counters (904.4)

Forward Approach



UNITED STATES ACCESS BOARD

63

Residential facilities

64

Residential

- Use of 2010 ADA Standards for HUD projects
- Definition of a “kitchen”
- Electrical outlets in kitchens
- Walk-in closets
- Kitchen storage space requirements

65

What is a Kitchen?

To be considered a kitchen (or kitchenette) a space must have at least one cooking element such as:

- **A range or oven**
- **A cook top**
- **A microwave oven**
- **A convection oven**

66

Non Kitchens



67

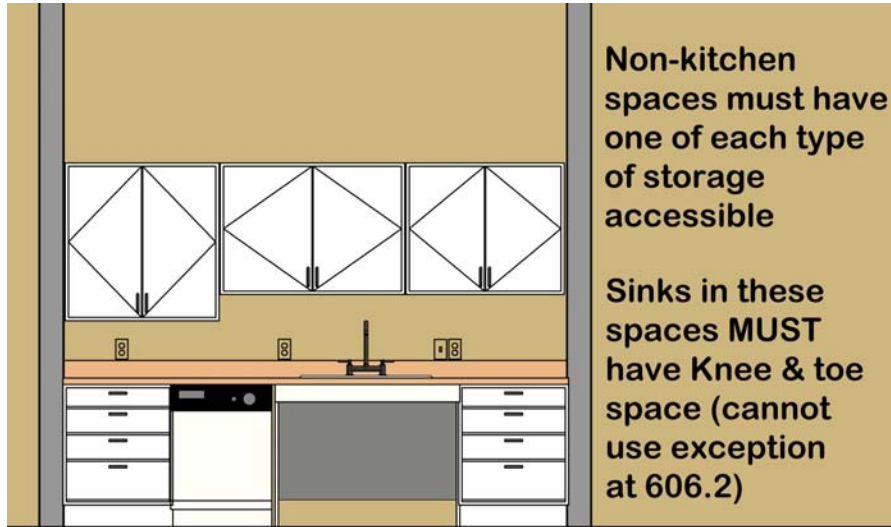
Non Kitchens

As the definition stated, to be a kitchen the space must have cooking facilities.

These spaces are not required to meet the 50% storage requirements of kitchens but where they have a sink it must always have knee and toe space if it is part of the 5% of sinks required to be accessible by 212.3 & F212.3.

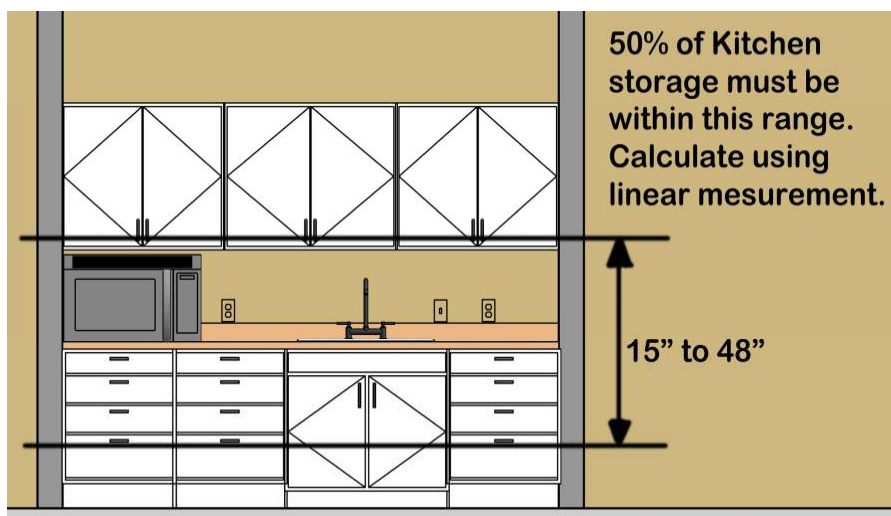
68

Storage in Non Kitchens



69

Kitchen Storage



70

Public Rights of Way

71

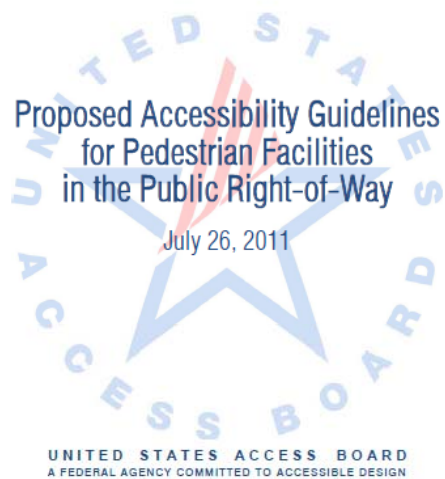
Pedestrian Bridges



72

Public Rights of Way

- NPRM published July 26, 2011
- Over 600 comments received
- Next step regulatory assessment and final rule
- SNPRM Published on Shared Use Path Guidelines - to be included with PROW provisions



73

Swimming pools/spas

74

Spas

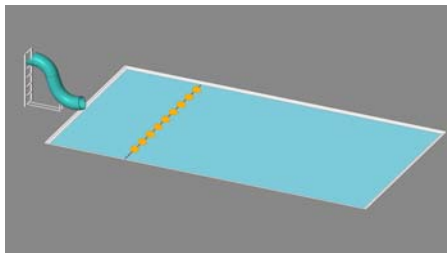
- **At least one means of entry:**
 - Lift - footrests not required
 - Transfer wall
 - Transfer system
- **Where provided, in a cluster, 5% but not less than one**



UNITED STATES ACCESS BOARD

75

Catch Pools



- “A pool or designated section of a pool used as a terminus for water slide flumes.”

76

Questions?

**You may type and submit questions
in the Chat Area Text Box or press
Control-M and enter text in the Chat
Area**

77

U.S. Access Board

**(800) 872-2253 (voice)
(800) 993-2822 (TTY)**

**E-mail: [ta@access-
board.gov](mailto:ta@access-board.gov)
www.access-board.gov**

78

**Thank you for participating
in today's webinar**



Next session:

Accessible Restaurants and Cafeterias

April 4, 2013

www.accessibilityonline.org

(877) 232-1990 (v/TTY)

79